

کانون ابزار
: تلفن
021 66 39 39 00
0912 147 3023
ali5.ir

- Optical measurement
- Measuring lengths from 50 mm to 1500 mm
- High resolution up to 1 μm
- $\pm 10 \mu\text{m}$ accuracy
- 5 ball bearing system
- Single seal protection
- 5 VDC TTL quadrature or 1vpp sinusoidal output signal
- Easy mounting
- 60 m/min traveling speed

ALS series optical linear encoder systems are protected from factors such as dust, shavings, dirt and coolant with its compact design. ALS5 series, which has optical measuring principle with glass ruler, can measure between 50 and 1500 mm.

APPLICATIONS

- | | | |
|-------------------------------------|---------------------------------------|---------------------------|
| • Manuel Benches | • Linear Bearing Systems | Transfer Machines |
| • Press Brakes and Bending Machines | • Automation and Robotic Applications | Turning, Milling |
| • Robotic / Material Packaging | • Textile Machinery | Woodworking machines etc. |

TECHNICAL FEATURES

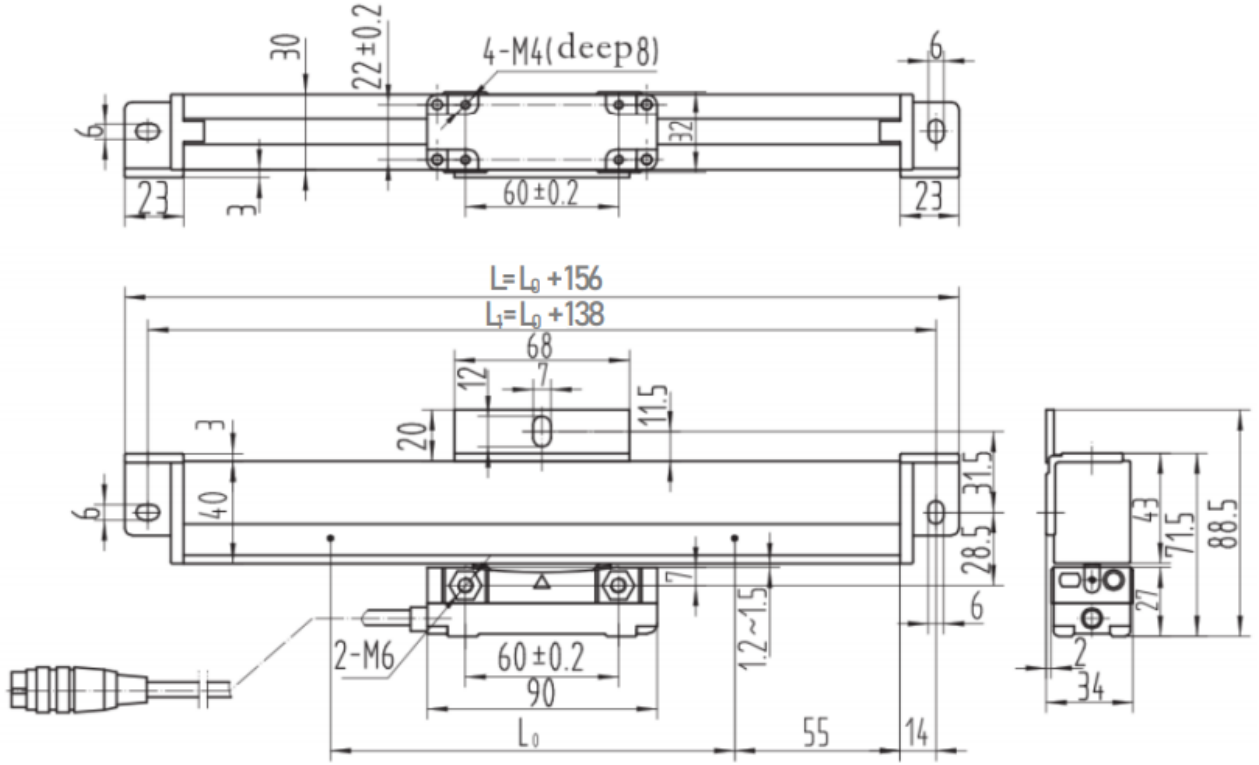
Measuring Type	Optical	Reference Mark	1 reference mark at every 50 mm
Measuring Lengths	Different lengths from 50 mm to 1500 mm	Body Material	Aluminum
Resolution	1 μm , 5 μm or 1Vpp sinusoidal	Operating Temperature	0°C...50 °C
Signal Period	20 μm	Storage Temperature	-20°C...70 °C
Accuracy	$\pm 10 \mu\text{m}$	Protection Class	IP54
Repeatability	± 1 pulse	Electrical Connection	Spiral cable and socket (For TTL Signal:D-SUB 9 pin male socket / For Sinus Signal: M16/8 pin female socket)
Max traveling speed	60m/min		
Supply Voltage	5 VDC	Max cable length	50-500mm (3m armoured cable) 600-2000mm (5m armoured cable)
Output Type	5V TTL or 1Vpp Sinusoidal		

ELECTRICAL CONNECTIONS

PIN NO	CABLE COLOR	D-SUB 9 PIN SOCKET	M16/8 PIN FEMALE SOCKET
		TTL SIGNAL	SINUS SIGNAL
1	WHITE	A	0°
2	BROWN	/B	180°
3	RED	+5VDC	+5VDC
4	BLACK	0V-GND	0V-GND
5	BLUE	/A	90°
6	GREEN	B	270°
7	YELLOW	/Z	Z
8	GREY	Z	N/C

In the table, the cable colors of sensors output signals are given. If the control circuit is suitable, in the line driver sensors, the not signals (/A, /B, /Z) have to be added to the system. If it is not suitable /A, /B, /Z signal cables must be fixed as insulated separately. Don't forget that these edges have electricity too.

MECHANICAL DIMENSIONS



L₀: Measuring Length (mm) (Different lengths from 50 to 1500 mm)

L₁: Distance between mounting holes (mm)

L : Body Length (mm)

ORDER CODE

Model				Measuring Length	
ALS 5	-	XX	-	Different lengths from 50 mm to 1500 mm	
				Resolution	
				01 : 1µm	
				05 : 5µm	
				S : Sinusoidal	

کانون ابزار

تلفن :

02166 39 39 00

0912 147 3023

ali5.ir

Atek Elektronik Sensör Teknolojileri Sanayi ve Ticaret A.Ş.



Gebze OSB, 800. Sokak, No:814 Gebze/KOCAELI/TURKEY



Tel: +90 262 673 76 00



Fax: +90 262 673 76 08



www.ateksensor.com



info@ateksensor.com