



**کانون ابزار**  
 تلفن :  
**021 66 39 39 00**  
**0912 147 3023**  
**ali5.ir**

- Optical measurement
- Measuring lengths from 50 mm to 3200 mm
- High resolution up to 1  $\mu\text{m}$
- $\pm 10 \mu\text{m}$  accuracy
- 5 ball bearing system
- Single seal protection
- 5 VDC TTL quadrature or 1vpp sinusoidal output signal
- Easy mounting
- 60 m/min traveling speed

ALS series optical linear encoder systems are protected from factors such as dust, shavings, dirt and coolant with its compact design. ALS6 series, which has optical measuring principle with glass ruler, can measure between 50 and 3200 mm.

### APPLICATIONS

- |                                     |                                     |                           |
|-------------------------------------|-------------------------------------|---------------------------|
| • Manuel Benches                    | Linear Bearing Systems              | Transfer Machines         |
| • Press Brakes and Bending Machines | Automation and Robotic Applications | Turning, Milling          |
| • Robotic / Material Packaging      | Textile Machinery                   | Woodworking machines etc. |

### TECHNICAL FEATURES

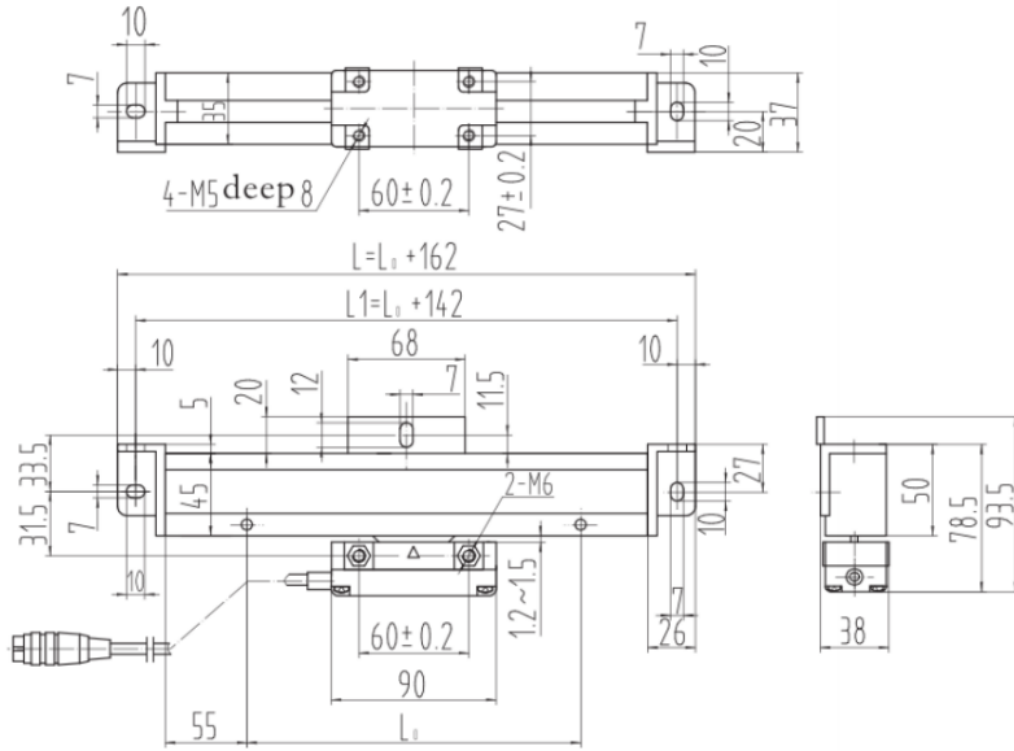
<b>Measuring Type</b>	Optical	<b>Reference Mark</b>	1 reference mark at every 50 mm
<b>Measuring Lengths</b>	Different lengths from 50 mm to 3200 mm	<b>Body Material</b>	Aluminum
<b>Resolution</b>	1 $\mu\text{m}$ , 5 $\mu\text{m}$ or 1Vpp sinusoidal	<b>Operating Temperature</b>	0°C...50 °C
<b>Signal Period</b>	20 $\mu\text{m}$	<b>Storage Temperature</b>	-20°C...70 °C
<b>Accuracy</b>	$\pm 10 \mu\text{m}$	<b>Protection Class</b>	IP54
<b>Repeatability</b>	$\pm 1$ pulse	<b>Electrical Connection</b>	Spiral cable and socket (For TTL Signal:D-SUB 9 pin male socket / For Sinus Signal: M16/8 pin female socket)
<b>Max traveling speed</b>	60m/min		
<b>Supply Voltage</b>	5 VDC	<b>Max cable length</b>	50-500mm (3m armoured cable) 600-2000mm (5m armoured cable)
<b>Output Type</b>	5V TTL or 1Vpp Sinusoidal		

### ELECTRICAL CONNECTIONS

PIN NO	CABLE COLOR	D-SUB 9 PIN SOCKET	M16/8 PIN FEMALE SOCKET
		TTL SIGNAL	SINUS SIGNAL
1	WHITE	A	0°
2	BROWN	/B	180°
3	RED	+5VDC	+5VDC
4	BLACK	0V-GND	0V-GND
5	BLUE	/A	90°
6	GREEN	B	270°
7	YELLOW	/Z	Z
8	GREY	Z	N/C

In the table, the cable colors of sensors output signals are given. If the control circuit is suitable, in the line driver sensors, the not signals (/A, /B, /Z) have to be added to the system. If it is not suitable /A, /B, /Z signal cables must be fixed as insulated separately. Don't forget that these edges have electricity too.

## MECHANICAL DIMENSIONS



$L_0$ : Measuring Length (mm) (Different lengths from 50 to 3200 mm)

$L_1$ : Distance between mounting holes (mm)

$L$ : Body Length (mm)

## ORDER CODE

Model				Measuring Length
ALS 6	-	XX	-	Different lengths from 50 mm to 3200 mm
				XXX
Resolution				
01 : 1 $\mu$ m				
05 : 5 $\mu$ m				
S : Sinusoidal				

# کانون ابزار

تلفن :

021 66 39 39 00

0912 147 3023

ali5.ir

Atek Elektronik Sensör Teknolojileri Sanayi ve Ticaret A.Ş.



Gebze OSB, 800. Sokak, No:814 Gebze/KOCAELİ/TURKEY



Tel: +90 262 673 76 00



Fax: +90 262 673 76 08



[www.ateksensor.com](http://www.ateksensor.com)



[info@ateksensor.com](mailto:info@ateksensor.com)